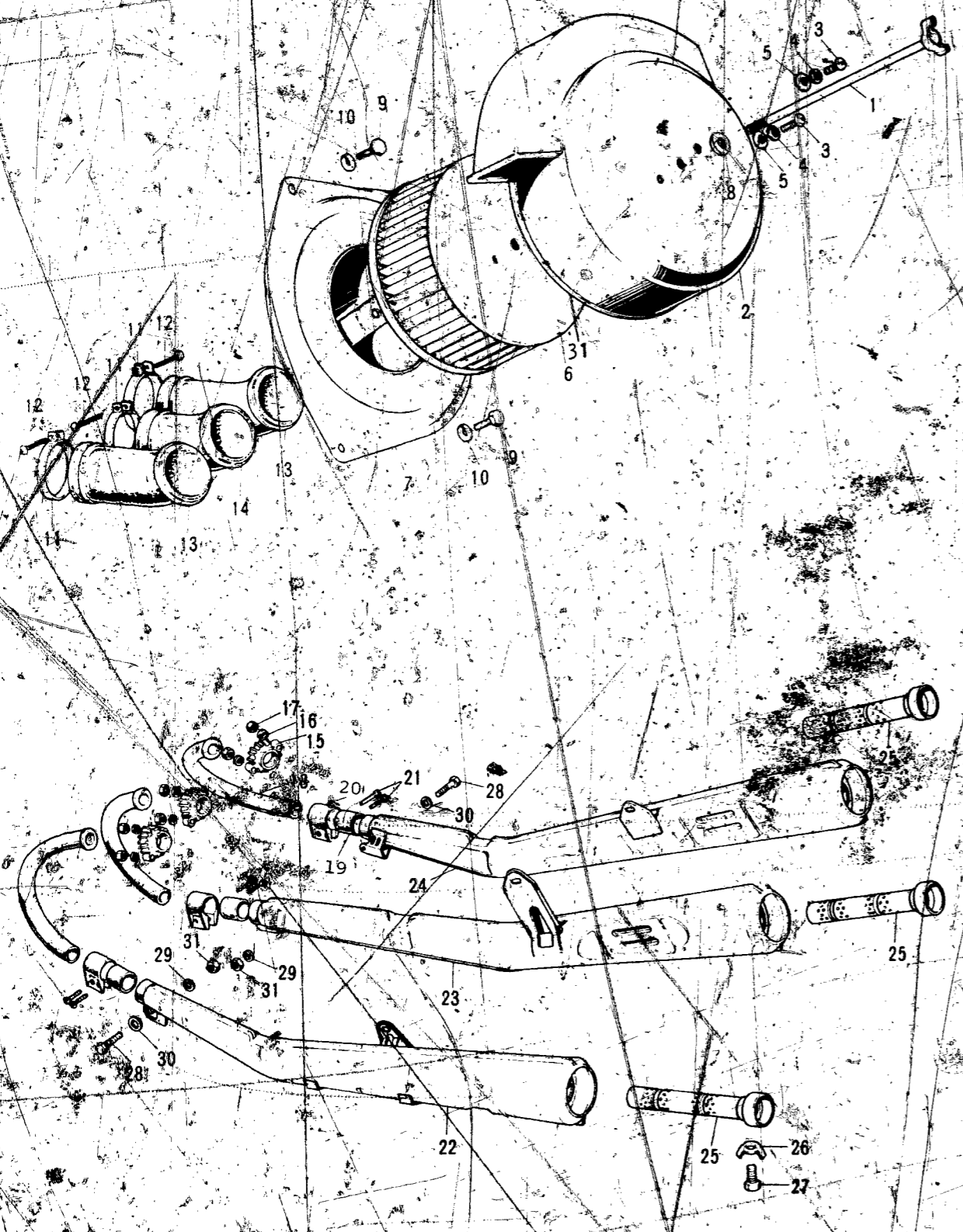


AIR CLEANER, MUFFLERS

CONTENTS



Ref. No.	Part No.	Part Name	Quantity	Remarks
1	9203-073	BOLT-air cleaner fitting	1	
2~6	11010-039	AIR CLEANER ASSY		
		WHN EXH USE 11010-039-21	1	
	11010-039-21	AIR CLEANER ASSY, Flat Black	1	
3	220B0408A	SCREW-pan head, 4x8	2	
4	461F0400	WASHER-spring, 4m/m	2	
5	411B0400	WASHER-plain, 4m/m	2	
6	11013-026	ELEMENT-air cleaner	1	
7	11011-013	BOBY-air cleaner	1	
8	72022-021	WASHER-plain	1	
9	110B0610	BOLT-hex head, 6x10	3	
	116B0610	BOLT-hex head, 6x10	ALT	
10	461F0600	WASHER-spring, 6m/m	3	
11	92037-034	CLAMP-air inlet pipe	3	
12	220B0635	SCREW-pan head, 6x35	3	
13	11015-024	PIPE-air inlet, L.H. & R.H.	2	
14	11015-025	PIPE-air inlet, CENTER	1	
15	18069-038	HOLDER-exhaust pipe	3	
16	461F0800	WASHER-spring, 8m/m	6	
17	310B0800	NUT, 8m/m	6	
18	18049-074	PIPE-exhaust	3	
19	18043-008	CONNECTOR-muffler	3	
20	18044-004-79	HOLDER-muffler connector	3	chrome
21	220B0628	SCREW-pan head, 6x28	6	
22, 25~27	18001-036	MUFFLER ASSY, L.H.	1	
23, 25~27	18001-037	MUFFLER ASSY, CENTER	1	
24~27	18001-038	MUFFLER ASSY, R.H.	1	
25	18033-048	BAFFLE TUBE	3	
26	92024-016	WASHER-lock, 6m/m	3	
27	110B0612	BOLT-hex head, 6x12	3	
	116B0612	BOLT-hex head, 6x12	ALT	
28	110B0820	BOLT-hex head, 8x20	2	
	116B0820	BOLT-hex head, 8x20	ALT	
29	461F0800	WASHER-spring, 8m/m	2	
30	411B0800	WASHER-plain, 8m/m	2	
31	11024-001	Rubber Seal, Cleaner	1	

AIR CLEANER	B7
BRAKE DISC	E5
BRAKE DISC, EQUIPMENT	G7
CABLES	F4
CARBURETOR	C2
CLUTCH	A7
COVERS, ENGINE	B5
COVERS, SIDE	E7
CRANKCASE	A5
CRANKSHAFT	A6
CYLINDER, CYLINDER HEAD	A4
ELECTRICAL, ENGINE	B6
ELECTRICAL, WIRING	G8
FENDERS	D7
FOOTREST	C6
FORK, FRONT, S2	D4
FORK, FRONT, S2-A	D5 D6
FRAME	C4
GEAR CHANGE MECHANISM	B3
HANDLEBAR	D2 D3
HEADLAMP, METERS, S2	F5
HEADLAMP, METERS, S2-A	F6
HUB, FRONT, S2	E4
HUB, FRONT, S2-A	E5
HUB, REAR	E3
KICKSTARTER	B4
MUFFLER	B7
OIL PUMP	C3
OPTIONAL PARTS	G4
PISTON, RINGS	A6
SEAT, DUAL, S2	F2
SEAT, DUAL, S2-A	F3
SWINGARM	C5
TAIL LAMP, S2	F7
TAIL LAMP, S2-A	G2
TANK, FUEL	E6
TANK, OIL	E7
TOOLS	G4
TRANSMISSION	B2
TURN SIGNAL, S2	F7
TURN SIGNAL, S2-A	G2
WHEELS	E2

S2/S2-A