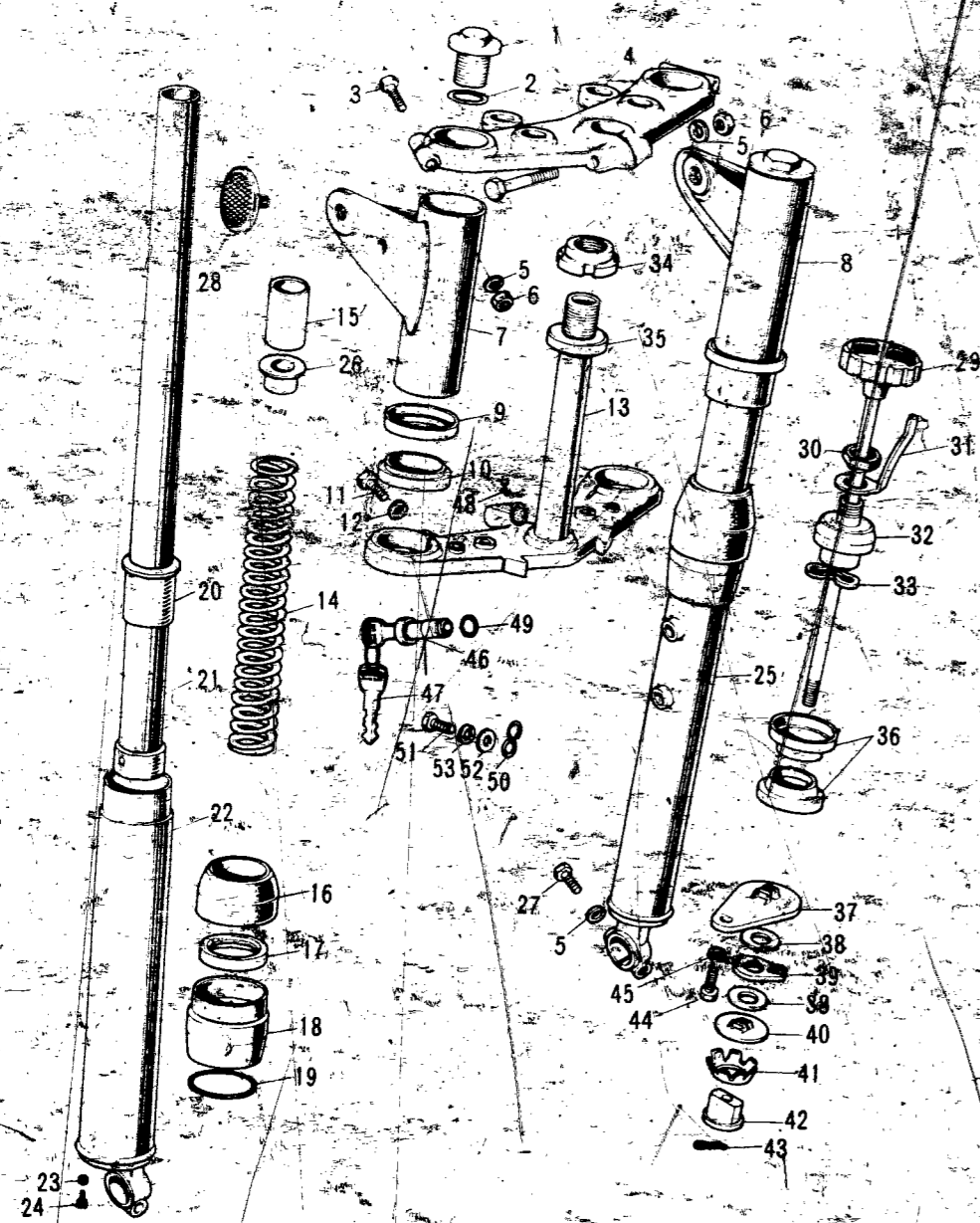


FRONT FORK S2

CONTENTS



Ref. No.	New Part No.	Part Name	Quantity	Remarks
1 ~ 27	44001-078-21	FRONT FORK ASSY	1	
1	44041-037	BOLT-fork top	2	
2	44046-015	"O" RING-fork top	2	
3	110B0856	BOLT-hex head, 8 x 56	3	
4	44039-037	HEAD-steering stem	1	
5	461F0800	WASHER-spring, 8 m/m	4	
6	310B0809	NUT, 8 m/m	3	
7	44033-038-21	COVER-L. H. fork	1	
8	44034-037-21	COVER-R. H. fork	1	
9	44043-034	WASHER-fork cover	2	
10	44045-029	GASKET-fork cover	2	
11	113B1036	BOLT-hex head, 10 x 36	2	
12	461F1090	WASHER-spring, 10 m/m	2	
13	44037-037	STEM-steering	1	
14	44026-038	SPRING-fork	2	
15	44028-022	HOLDER-fork spring	2	
16	44010-017	DUST SHIELD-fork	2	
17	44009-010	OIL SEAL-fork	2	
18	44007-015	NUT-fork, outer tube	2	
19	44046-016	"O" RING-outer tube nut	2	
20	44015-011	GUIDE-fork inner tube	2	
21	44013-031	TUBE-fork inner	2	
22	44005-039	TUBE-L. H. fork outer	1	
23	44045-002	GASKET-fork drain plug	2	
24	220B0408A	SCREW-pan head, 4 x 8	2	
25	44006-037	TUBE-R. H. outer tube	1	
26	44029-019	SEAT-fork spring	2	
27	44041-017	BOLT-front axle	1	
28	28001-008	REFLECTOR-reflex	2	
29	46101-004	KNOB-steering damper	1	
30	315N1200A	NUT-12 m/m	1	
31	46126-001	SPRING-steering damper knob	1	
32	92090-020	NUT-steering stem	1	
33	46100-002	WASHER-steering stem	1	
34	92090-007	NUT-steering stem lock	1	
35	46098-010	CAP-steering stem	1	
36	92047-006	CONE-steering stem bearing	2	
37	46106-005	PLATE-steering damper steel	1	
38	46104-005	PLATE-steering damper friction	2	
39	46105-005	PLATE-steering damper anchor	1	
40	46106-006	PLATE-steering damper steel	1	
41	46124-005	SPRING-steering damper	1	
42	46125-005	NUT-steering damper guide	1	
43	550D1615	COTTER PIN, 1.6 x 15	1	
44	114B0812	BOLT-hex head, 8 x 12	1	
45	461F0800	WASHER-spring, 8 m/m	1	
46, 47	27016-024	LOCK ASSY-steering	1	
47	27008-042-85	KEY SET, #685	27008-042-01	KEY SET, #701
	27008-042-86	KEY SET, #686	27008-042-02	KEY SET, #702
	27008-042-87	KEY SET, #687	27008-042-03	KEY SET, #703
	27008-042-88	KEY SET, #688	27008-042-04	KEY SET, #704
	27008-042-89	KEY SET, #689	27008-042-05	KEY SET, #705
48	92099-001	SCREW-rivet	1	
49	92033-024	CIRCLIP-steering lock	1	
50	92037-046	CLAMP-cable	1	
51	116B0612	BOLT-hex head, 6 x 12	1	
	116B0612	BOLT-hex head, 6 x 12	ALT	
52	410B0600	WASHER-plain, 6 m/m	1	
53	461F0660	WASHER-plain, 6 m/m	1	

AIR CLEANER	B7
BRAKE, DISC	E5
BRAKE DISC, EQUIPMENT	C7
CABLES	F4
CARBURETOR	C2
CLUTCH	A7
COVERS, ENGINE	B5
COVERS, SIDE	E7
CRANKCASE	A5
CRANKSHAFT	A6
CYLINDER, CYLINDER HEAD	A4
ELECTRICAL, ENGINE	B6
ELECTRICAL, WIRING	G3
FENDERS	D7
FOOTREST	C6
FORK, FRONT, S2	D4
FORK, FRONT, S2-A	D5; D6
FRAME	C4
GEAR CHANGE MECHANISM	B3
HANDLEBAR	D2, D3
HEADLAMP, METERS, S2	F5
HEADLAMP, METERS, S2-A	F6
HUB, FRONT, S2	E4
HUB, FRONT, S2-A	E5
HUB, REAR	E3
KICKSTARTER	B4
MUFFLER	B7
OIL PUMP	C3
OPTIONAL PARTS	G4
PISTON, RINGS	A6
SEAT, DUAL, S2	F2
SEAT, DUAL, S2-A	F3
SWINGARM	C5
TAIL LAMP, S2	F7
TAIL LAMP, S2-A	G2
TANK, FUEL	E6
TANK, OIL	E7
TOOLS	G4
TRANSMISSION	B2
TURN SIGNAL, S2	F7
TURN SIGNAL, S2-A	G2
WHEELS	E2