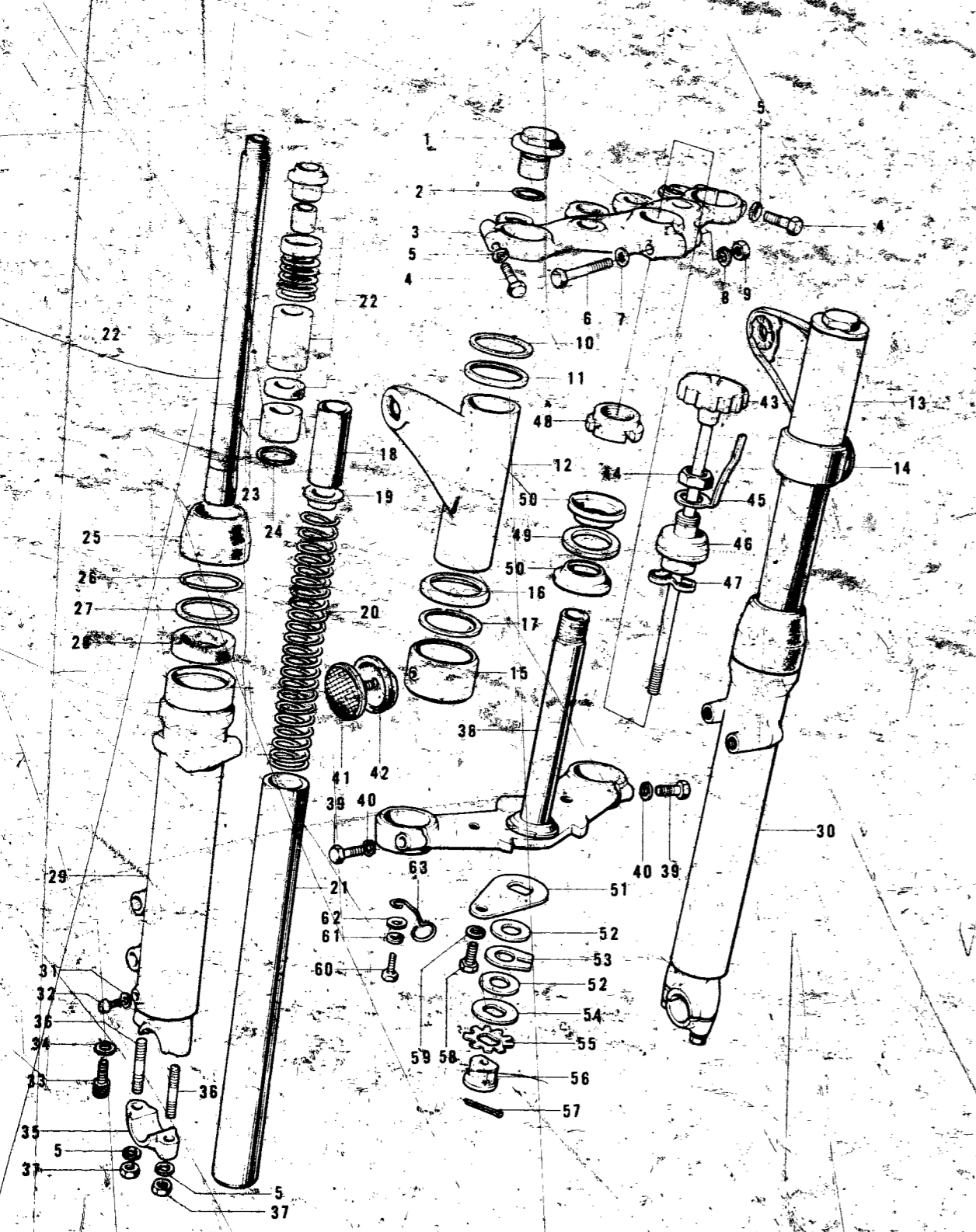


FRONT FORK S2-A

CONTENTS

Ref. No	Part No	Part Name	QTY
1-40	44001-097-21	FRONT FORK ASSY, flat black	1
	44001-144	FRONT FORK ASSY, Cr-Plated	1
1	44041-037	BOLT-fork top	2
2	44046-017	"O" RING-fork top bolt	2
3	44039-051	HEAD-steering stem	1
4	44041-044	BOLT-hex head, 8 x 30	2
5	461F0800	WASHER-spring, 8 m/m	6
6	44041-042	BOLT-hex head, 8 m/m	1
7	463B0800	WASHER-lock, 8 m/m	1
8	410B0800	WASHER-plain, 8-m/m	1
9	92019-007	NUT, 8-m/m	1
10	44045-039	GASKET-fork cover	2
11	44043-047	GUIDE-fork cover	2
12	44033-053-21	COVER-L.H fork cover	1 Flat Black
	44033-067	COVER-L.H fork cover	1 Cr-Plated
13	44034-053-21	COVER-R.H fork cover	1 Flat Black
	44034-067	COVER-R.H fork cover	1 Cr-Plated
14	44064-009	GUIDE-fork cover, R.H	1
15	44064-010	GUIDE-fork cover, L.H	1
16	44032-005	GUIDE-fork cover	2
17	44045-029	GASKET-fork cover	2
18	44028-026	SPACER-fork spring guide	2
19	44029-019	GUIDE-fork spring	2
20	44026-043	SPRING-fork	2
21	44013-038	TUBE-fork inner	2
22~24	44023-005	DAMPER CYLINDER SET	2
	44022-011	CYLINDER-fork	2
	44022-026	CYLINDER-fork (use for 44023-005)	2
23	44018-001	PISTON-fork	2
	44018-009	PISTON-fork (use with 44022-026)	2
24	44044-008	CIRCLIP-fork piston	2
	44044-019	CIRCLIP-fork piston (use with 44022-026)	2
25	44010-019	DUST SHIELD	2
26	44044-005	CIRCLIP	2
27	44043-023	WASHER-plain	2
28	44009-013	OIL SEAL	2
29	44005-046	TUBE-L.H fork outer	1
30	44006-044	TUBE-R.H fork outer	1
31	44045-002	GASKET-fork drain plug	2
32	220B0408A	SCREW-pan head, 4 x 8	2
33	44041-040	BOLE-fork cylinder	2

AIR CLEANER	B7
BRAKE, DISC	E5
BRAKE DISC, EQUIPMENT	C7
CABLES	F4
CARBURETOR	C2
CLUTCH	A7
COVERS, ENGINE	B5
COVERS, SIDE	E7
CRANKCASE	A5
CRANKSHAFT	A6
CYLINDER, CYLINDER HEAD	A4
ELECTRICAL, ENGINE	B6
ELECTRICAL, WIRING	G3
FENDERS	D7
FOOTREST	C6
FORK, FRONT, S2	D4
FORK, FRONT, S2-A	D5, D6
FRAME	C4
GEAR CHANGE MECHANISM	B3
HANDLEBAR	D2, D3
HEADLAMP, METERS, S2	F5
HEADLAMP, METERS, S2-A	F6
HUB, FRONT, S2	E4
HUB, FRONT, S2-A	E5
HUB, REAR	E3
KICKSTARTER	B4
MUFFLER	B7
OIL PUMP	C3
OPTIONAL PARTS	G4
PISTON, RINGS	A6
SEAT, DUAL, S2	F2
SEAT, DUAL, S2-A	F3
SWINGARM	C5
TAIL LAMP, S2	F7
TAIL LAMP, S2-A	G2
TANK, FUEL	E6
TANK, OIL	E7
TOOLS	G4
TRANSMISSION	B2
TURN SIGNAL, S2	F7
TURN SIGNAL, S2-A	G2
WHEELS	E2



S2-A

D5