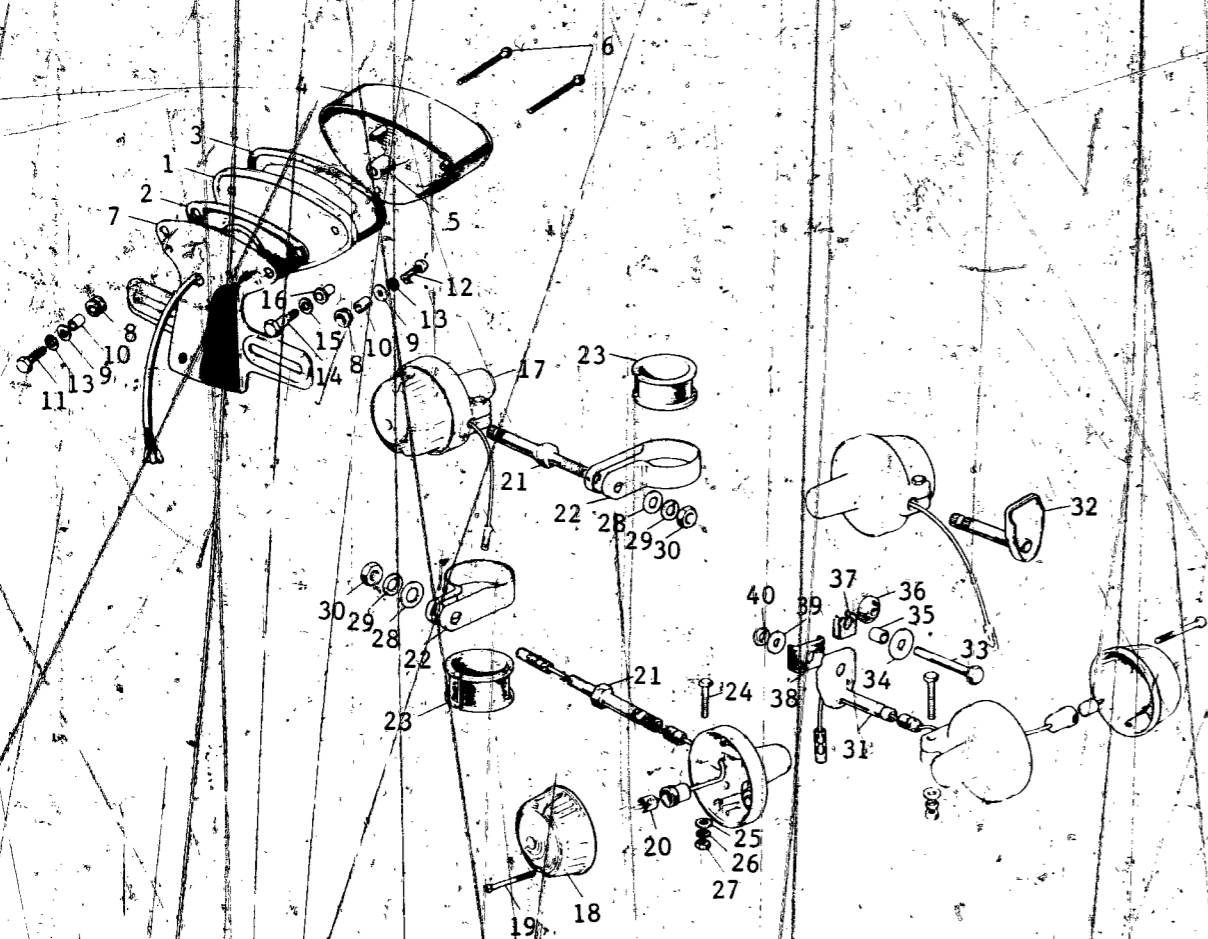


TAIL LAMP, TURN SIGNALS

CONTENTS



Ref. No.	Part No.	Part Name	Quantity	Remarks
1-6	23025-044	LAMP ASSY-tail lamp	1	
1	23027-029	SOCKET-tail lamp	1	
2	23028-015	GASKET-tail lamp	1	
3	23028-016	GASKET-tail lamp	1	
4	23026-022	LENS-tail lamp	1	
5	92069-059	BULB, 12V-32/4CP	1	
6	220E0455A	SCREW-pan head, 4x55	4	
7	23036-012-21	BRACKET-tail lamp	1	
8	92075-112	DAMPER/RUBBER	3	
9	92022-125	WASHER-plain, 6m/m	3	
10	92027-120	COLLAR-lamp bracket	3	
11	110B0620	BOLT-hex head, 6x20	2	
12	116B0620	BOLT-hex head, 6x20	ALT	
13	220B0620	SCREW-pan head, 6x20	1	
14	461F0600	WASHER-spring, 6m/m	3	
15	92001-105	BOLT-tail lamp fitting	2	
16	92022-195	WASHER-plain	2	
17	92075-091	DAMPER/RUBBER	2	
18	23048-012	LAMP ASSY-turn signal	4	
19	23048-012	LENS-turn signal lamp	4	
20	220E0430A	SCREW-pan head, 4x30	8	
21	92069-055	BULB, 12V-32cp	4	
22	23051-027	STAY-turn signal lamp	2	
23	23051-021	BRACKET-turn signal lamp	2	
24	92075-088	DAMPER/RUBBER	2	
25	110N0630	BOLT-hex head, 6x30	4	
26	410B0600	WASHER-plain, 6m/m	4	
27	461E0600	WASHER-spring, 6m/m	4	
28	310B0600	NUT, 6m/m	4	
29	410B1200	WASHER-plain, 12m/m	2	
30	461E1200	WASHER-spring, 12m/m	2	
31	315B1200A	NUT, 12m/m	2	
32	23051-018	BRACKET-rear turn signal R/H	1	
33	23051-019	BRACKET-rear turn signal L/H	1	
34	113N1055	BOLT-hex head 10x55	2	
35	92022-206	WASHER-plain, 10m/m	2	
36	92027-137	COLLAR	2	
37	92075-114	DAMPER/RUBBER	2	
38	23061-003	PLATE-earth	2	
39	92075-082	DAMPER/RUBBER B	2	
40	411B1000	WASHER-plain, 10m/m	2	
40	461F1000	WASHER-plain, 10m/m	2	

AIRCLEANER	B7
BRAKE, DISC	E5
BRAKE DISC, EQUIPMENT	C7
CABLES	F4
CARBURETOR	C2
CLUTCH	A7
COVERS, ENGINE	B5
COVERS, SIDE	E7
CRANKCASE	A5
CRANKSHAFT	A6
CYLINDER, CYLINDER HEAD	A4
ELECTRICAL, ENGINE	B6
ELECTRICAL, WIRING	G3
FENDERS	D7
FOOTREST	C6
FORK, FRONT, S2	D4
FORK, FRONT, S2-A	D5, D6
FRAME	C4
GEAR CHANGE MECHANISM	B3
HANDLEBAR	D2, D3
HEADLAMP, METERS, S2	F5
HEADLAMP, METERS, S2-A	F6
HUB, FRONT, S2	E4
HUB, FRONT, S2-A	E5
HUB, REAR	E3
KICKSTARTER	B4
MUFFLER	B7
OIL PUMP	C3
OPTIONAL PARTS	G4
PISTON, RINGS	A6
SEAT, DUAL, S2	F2
SEAT, DUAL, S2-A	F3
SWINGARM	C5
TAIL LAMP, S2	F7
TAIL LAMP, S2-A	G2
TANK, FUEL	E6
TANK, OIL	E7
TOOLS	G4
TRANSMISSION	B2
TURN SIGNAL, S2	F7
TURN SIGNAL, S2-A	G2
WHEELS	E2