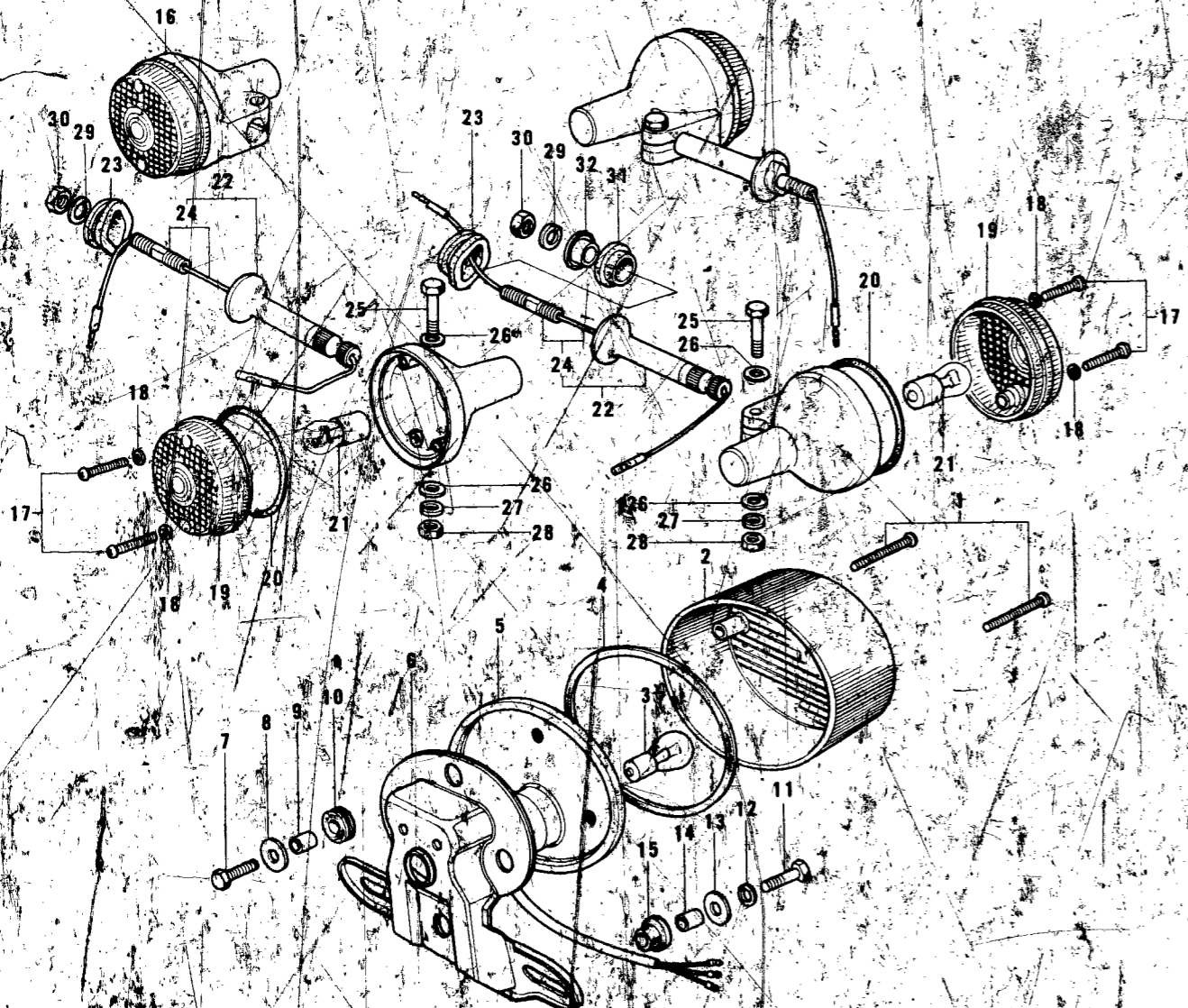


TAIL LAMP, TURN SIGNALS S2-A

CONTENTS



Ref. No.	Part No.	Part Name	Quantity	Remarks
1 ~ 10	23024-026-21	LAMP ASSY—tail	1	Flat Black
1	220E0435A	SCREW—pan head, 4 x 35	2	
2	23026-023	LENS—tail lamp	1	
3	92069-039	BULB, 12V, 32/4CP	1	
4	23028-018	GASKET—tail lamp	1	
5	23027-090	CASE—tail lamp	1	
6	23036-022-21	BRACKET—license plate	1	Flat Black
7	110B0620	BOLT—hex head, 6 x 20	3	
	116B0620	BOLT—hex head, 6 x 20	ALT	
8	92022-125	WASHER—plain	3	
9	92027-129	COLLAR	3	L=8.5 m/m
10	92075-076	DAMPER RUBBER	3	
11	110B0622	BOLT—hex head, 6 x 22	3	
	116B0622	BOLT—hex head, 6 x 22	ALT	
12	461F0600	WASHER—spring, 6 m/m	3	
13	92022-125	WASHER—plain	3	
14	92027-129	COLLAR	3	L=10.5 m/m
15	92075-112	DAMPER RUBBER	3	
16	23040-037	LAMP ASSY—turn signal	4	
17	220E0420A	SCREW—pan head, 4 x 20	8	
18	23058-002	WASHER—plain, 4 m/m	8	
19	23048-013	LENS—turn signal lamp	4	
20	23050-003	GASKET—turn signal lamp lens	4	
21	92069-055	BULB, 12V 32CP	4	
22	23078-001	BRACKET—turn signal lamp	4	
23	92075-128	DAMPER RUBBER	4	
24	23073-001	BOLT SET—signal lamp bracket	4	
25	116N0630	BOLT—hex head, 6 x 30	4	
26	410B0600	WASHER—plain, 6 m/m	8	
27	461F0600	WASHER—spring, 6 m/m	4	
28	310B0900	NUT, 6 m/m	4	
29	461F1000	WASHER—spring, 10 m/m	4	
30	315B1000	NUT, 10 m/m	4	
31	92075-158	DAMPER RUBBER	2	
32	92027-147	COLLAR	2	

AIR CLEANER	B7
BRAKE, DISC	E5
BRAKE DISC, EQUIPMENT	C7
CABLES	F4
CARBURETOR	C2
CLUTCH	A7
COVERS, ENGINE	B5
COVERS, SIDE	E7
CRANKCASE	A5
CRANKSHAFT	A6
CYLINDER, CYLINDER HEAD	A4
ELECTRICAL, ENGINE	B6
ELECTRICAL, WIRING	G3
FENDERS	D7
FOOTREST	C6
FORK, FRONT, S2	D4
FORK, FRONT, S2-A	D5, D6
FRAME	C4
GEAR CHANGE MECHANISM	B3
HANDLEBAR	D2, D3
HEADLAMP, METERS, S2	F5
HEADLAMP, METERS, S2-A	F6
HUB, FRONT, S2	E4
HUB, FRONT, S2-A	E5
HUB, REAR	E3
KICKSTARTER	B4
MUFFLER	B7
OIL PUMP	C3
OPTIONAL PARTS	G4
PISTON, RINGS	A6
SEAT, DUAL, S2	F2
SEAT, DUAL, S2-A	F3
SWINGARM	C5
TAIL LAMP, S2	F7
TAIL LAMP, S2-A	G2
TANK, FUEL	E6
TANK, OIL	E7
TOOLS	G4
TRANSMISSION	B2
TURN SIGNAL, S2	F7
TURN SIGNAL, S2-A	G2
WHEELS	E2