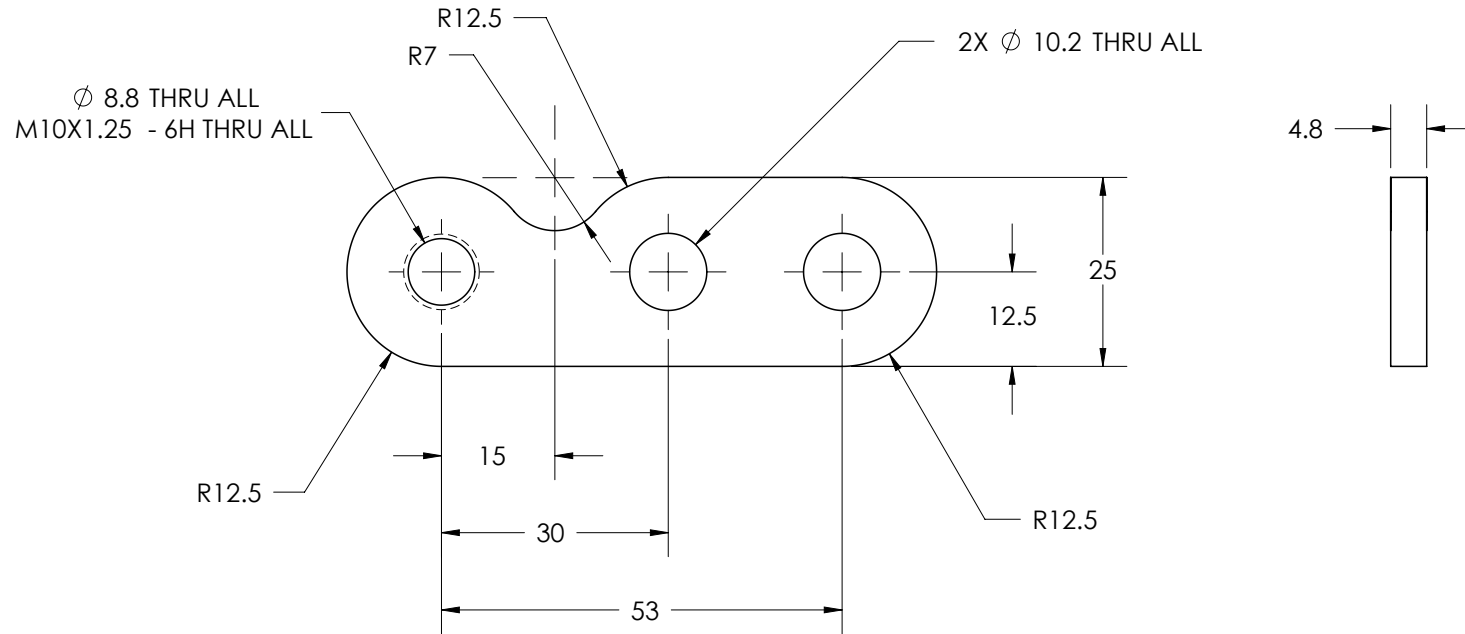


10 PCS.  
3/16" MILD STEEL



TOLERANCE UNLESS OTHERWISE SPECIFIED	
MILLIMETERS	INCHES
<100 ±0.20	X ± .1
>100 <300 ±0.30	X.X ± .03
>300 <1000 ±0.40	X.XX ± .01
>1000 ±0.80	X.XXX ± .005
ANGLES ±30'	FRACTIONS ± 1/32
FIN. μ √3.2	ANGLES ±30'
	FIN. MICRO. INCH √125
CONCENTRICITY .05	.002 T.I.R.
SQUARENESS .05	.002 T.I.R.
PARALLEL .15	.005
FINISHED WT.	0.06 Kg

		<b>H2-EX-01</b>	
		<b>CALIPER ADAPTOR</b>	
DRAWN: A.WALMSLEY		SIZE <b>A</b>	MATERIAL SAE 1018
SCALE 1:1	28/03/2008	SHEET	DF: