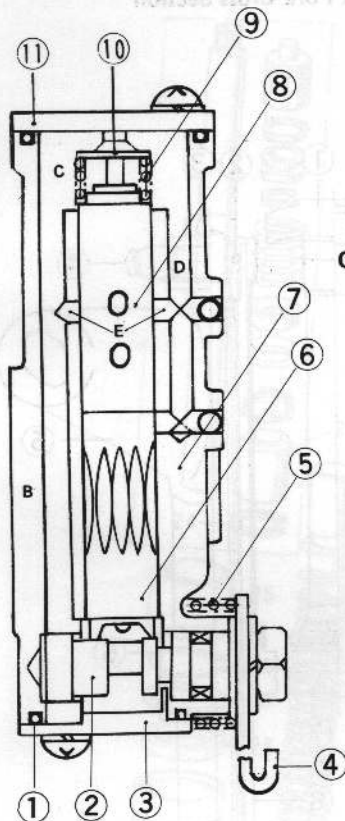
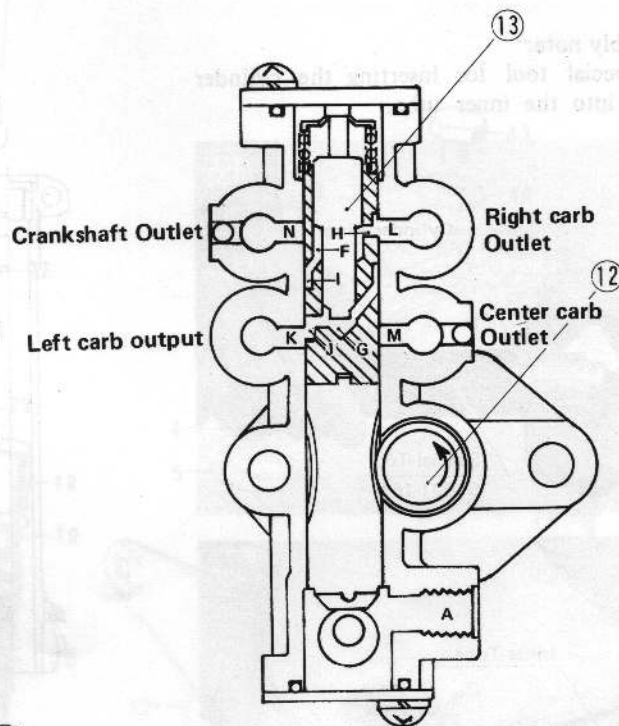


Oil pump



1. O Ring
2. Control Cam
3. Cap
4. Pump Lever
5. Spring
6. Plunger
7. Pump Body



8. Plunger Follower
9. Spring
10. Spring Seat
11. Cap
12. Pump Shaft
13. Piston

Table 41 Oil Pump Output

Output/3 minutes @2,000 rpm
0.166~0.199 oz. (4.9~5.9 cc)

- If the oil pump output is subnormal, disassemble the pump, inspect the "O" rings and oil seal, and replace any defective. If the trouble is with parts other than the "O" rings or oil seal, replace the oil pump as an assembly. The pump is precision made with no allowance for replacement of individual parts.
- Loosen the banjo bolt on the oil pump, and push back the check valve in its place. Retighten the banjo bolt.
- Take out the screw from the right carburetor, and install the banjo bolt and oil hose.
- Replace the oil pump cover.

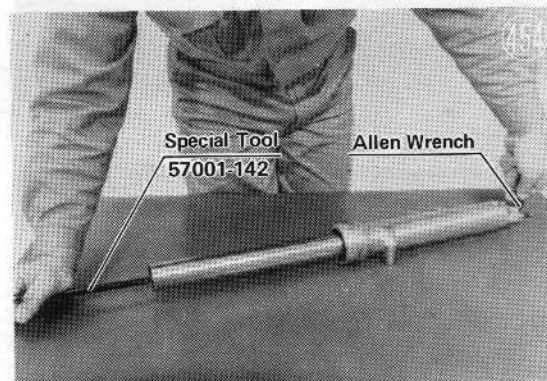
2. FRAME

1) Front Fork Tubes (H2-B, H1-E)

(1) Fork tube disassembly

- Remove the top bolt (2) and dump out the spring (20) and the fork oil.

- Take the dust seal (25) off the outer tube (29).
- Holding the cylinder (22) with a special tool, remove the Allen bolt (33) from the bottom of the tube, and pull out the inner tube (21).



- Remove the circlip (24) inside the inner tube, using circlip pliers, and the cylinder assembly (22) will come out of the tube.
- Remove the circlip (26) from the outer tube with a sharp hook.
- Also pull the oil seal (28) out with a hook.