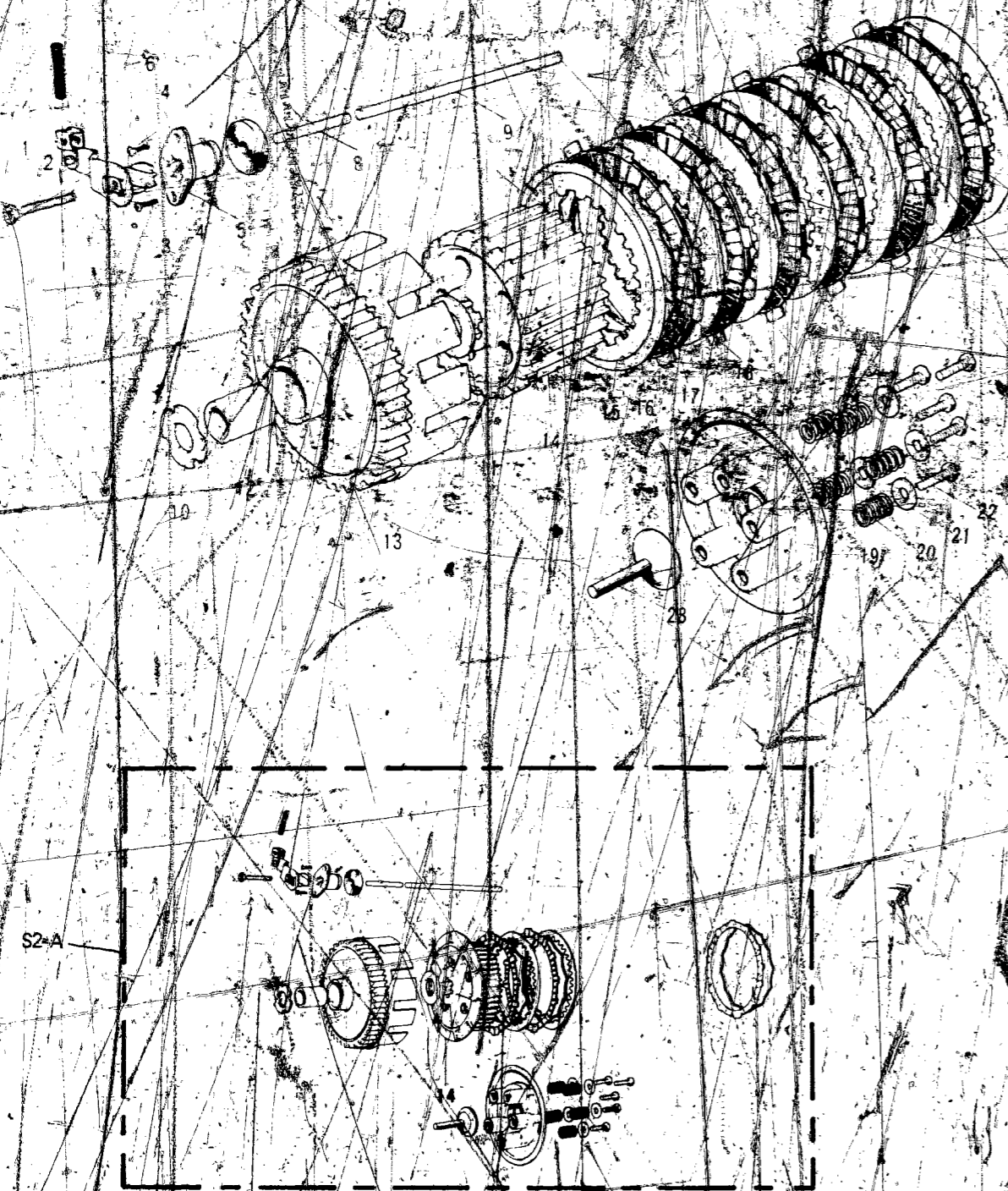


CLUTCH

CONTENTS



Ref. No.	Part No.	Part Name	Quantity	Remarks
1	11B0600	NUT, 6m/m	1	
2	110B0600	NUT, 6m/m	AUT	
3	93Z0622	SCREW-slotted, 6x22	1	
4	13231-010	CLUTCH RELEASE SET	1	
5	13102-017	INNER-clutch release	1	
6	221B0616	SCREW-countersink head, 6x16	2	
7	13118-008	OUTER-clutch release	1	
8	92081-096	SPRING-clutch release	1	
9	92050-040	OIL SEAL	1	
10	13116-010	PUSH ROD-clutch	1	L=49m/m
11	13116-019	PUSH ROD-clutch	1	L=167.5m/m
12	92022-189	WASHER-thrust	1	
13	92022-189	WASHER-thrust	1	
14	92028-045	BUSHING-clutch	1	
15-22	13081-055	CLUTCH ASSY	1	
13	13095-032	HOUSING-clutch	1	
14	13087-028	HUB-clutch	1	
14	13087-033	HUB-clutch	1	S2-A
15	13090-092	PLATE-clutch outer, Not required for 13087-033	1	
16	13088-003	PLATE-clutch steel	5	
17	13088-025	PLATE-clutch friction	6	
18	13229-062	RING-clutch steel	6	
19	13187-004	PLATE-clutch spring	1	
20	92081-095	SPRING-clutch	5	
21	92022-167	HOLDER-clutch spring	5	
22	92003-078	BOLT-hex head, 5x18	5	
23	13116-016	PUSHER-clutch spring plate	1	

AIRCLEANER	B7
BRAKE DISC	B5
BRAKE DISC EQUIPMENT	C7
CABLES	F4
CARBURETOR	C2
CLUTCH	A7
COVERS, ENGINE	B5
COVERS, SIDE	E1
CRANKCASE	A3
CRANKSHAFT	A6
CYLINDER, CYLINDER HEAD	A4
ELECTRICAL, ENGINE	B6
ELECTRICAL WIRING	C8
FENDERS	D7
FOOTREST	C6
FORK, FRONT, S2	D4
FORK, FRONT, S2-A	D5 D6
FRAME	C4
GEAR CHANGE MECHANISM	B3
HANDLEBAR	D2 D3
HEADLAMP METERS, S2	F5
HEADLAMP METERS, S2-A	F6
HUB, FRONT S2	E4
HUB, FRONT, S2-A	E5
HUB, REAR	E3
KICKSTARTER	B4
MUFFLER	B7
OIL PUMP	C3
OPTIONAL PARTS	G4
PISTON, RINGS	A6
SEAT, DUAL, S2	F2
SEAT, DUAL, S2-A	F3
SWINGARM	C5
TAIL LAMP, S2	E7
TAIL LAMP, S2-A	G2
TANK, FUEL	E6
TANK, OIL	E7
TOOLS	G4
TRANSMISSION	B2
TURN SIGNAL, S2	F7
TURN SIGNAL, S2-A	G2
WHEELS	E2

S2/S2-A

A7