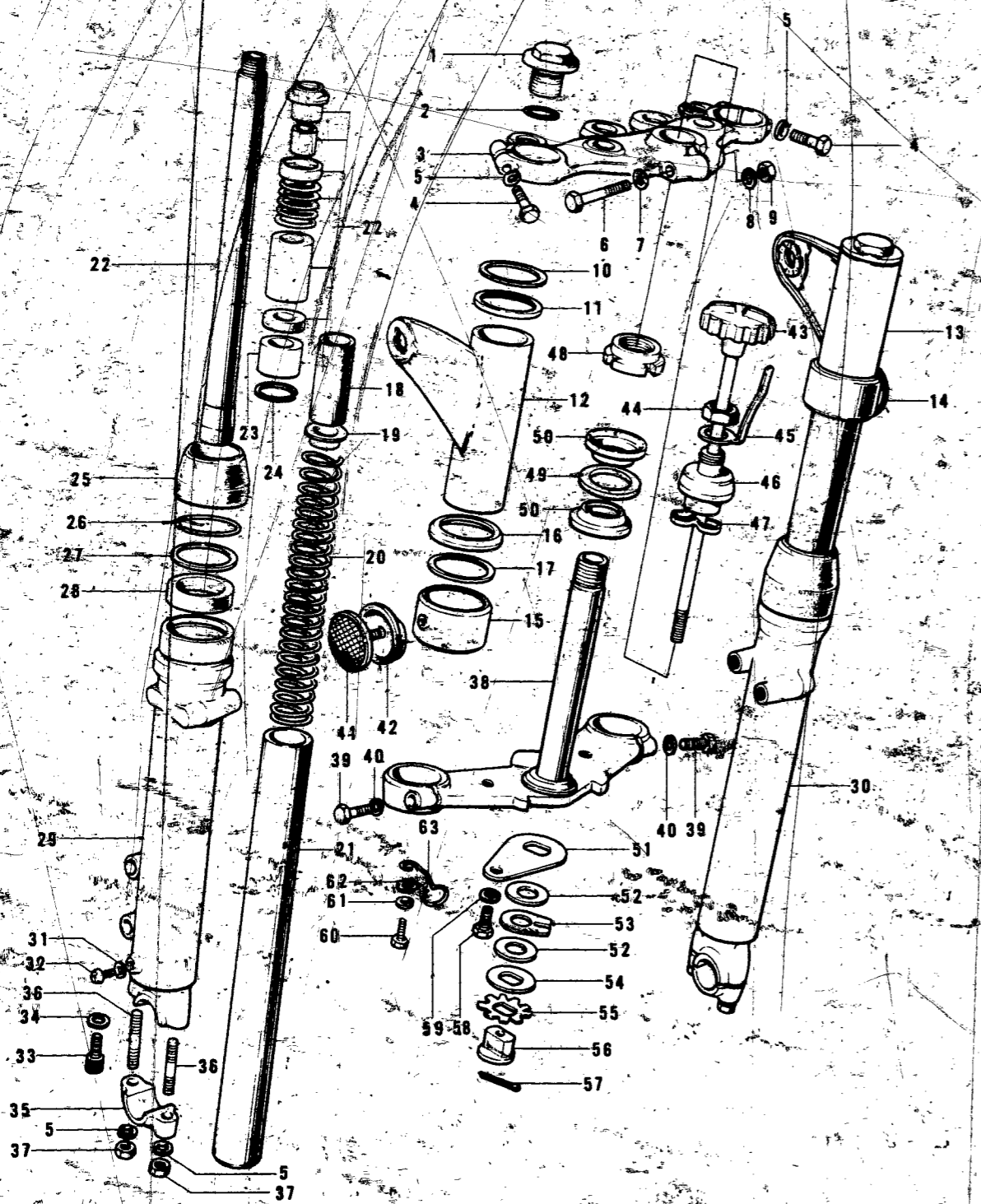


FRONT FORK S2-A

CONTENTS



Ref. No.	Part No.	Part Name	Quantity	Remarks
34	44045-034	GASKET—fork-cylinder bolt	2	
35	44063-006	HOLDER—front axle	2	
36	172G0830	STUD, 8 x 30	4	
37	310B0800	NUT, 8 m/m	4	
38	44037-058	STEM—steering	1	
39	113B1032	BOLT—hex head, 10 x 32	2	
40	461F1000	WASHER—spring, 10 m/m	2	
41, 42	28001-019	REFLECTOR—front reflex	2	
42	28016-002	DAMPER RUBBER—reflector	2	
43	46101-007	KNOB—steering damper	1	
44	315N1200A	NUT, 12 m/m	1	
45	46126-001	SPRING—steering damper	1	
46	92090-020	NUT—steering stem	1	
47	46100-002	WASHER—wave	1	
48	92020-007	NUT—steering stem lock	1	
49	46098-010	CAP—steering stem	1	
50	92047-006	CONE—steering stem bearing	2	
51	46106-007	PLATE—steering damper steel	1	
52	46104-005	PLATE—steering damper friction	2	
53	46105-005	PLATE—steering damper anchor	1	
54	46106-008	PLATE—steering damper steel	1	
55	46124-006	SPRING—steering damper	1	
56	46125-005	NUT—steering damper guide	1	
57	550D1615	PIN—cotter, 1.6 x 15	1	
58	114B0812	BOLT—hex head, 8 x 12	1	
59	461F0800	WASHER—spring, 8 m/m	1	
60	110B0610	BOLT—hex head, 6 x 10	1	
	116B0610	BOLT—hex head, 6 x 10	ALT	
61	461F0600	WASHER—spring, 6 m/m	1	
62	410B0600	WASHER—plain, 6 m/m	1	
63	92037-099	CLAMP—cable	1	

AIR CLEANER	B7
BRAKE DISC	E5
BRAKE DISC, EQUIPMENT	C7
CABLES	F4
CARBURETOR	G2
CLUTCH	A7
COVERS, ENGINE	B5
COVERS, SIDE	E7
CRANKCASE	A5
CRANKSHAFT	A6
CYLINDER, CYLINDER HEAD	A4
ELECTRICAL, ENGINE	B6
ELECTRICAL, WIRING	G3
FENDERS	D7
FOOTREST	C6
FORK, FRONT, S2	D4
FORK, FRONT, S2-A	D5, D6
FRAME	C4
GEAR CHANGE MECHANISM	B3
HANDLEBAR	D2, D3
HEADLAMP, METERS, S2	F5
HEADLAMP, METERS, S2-A	F6
HUB, FRONT, S2	E4
HUB, FRONT, S2-A	E5
HUB, REAR	E3
KICKSTARTER	B4
MUFFLER	B7
OIL PUMP	C3
OPTIONAL PARTS	G4
PISTON, RINGS	A6
SEAT, DUAL, S2	F2
SEAT, DUAL, S2-A	F3
SWINGARM	C5
TAIL LAMP, S2	F7
TAIL LAMP, S2-A	G2
TANK, FUEL	E6
TANK, OIL	E7
TOOLS	G4
TRANSMISSION	B2
TURN SIGNAL, S2	F7
TURN SIGNAL, S2-A	G2
WHEELS	E2

S2-A

D6