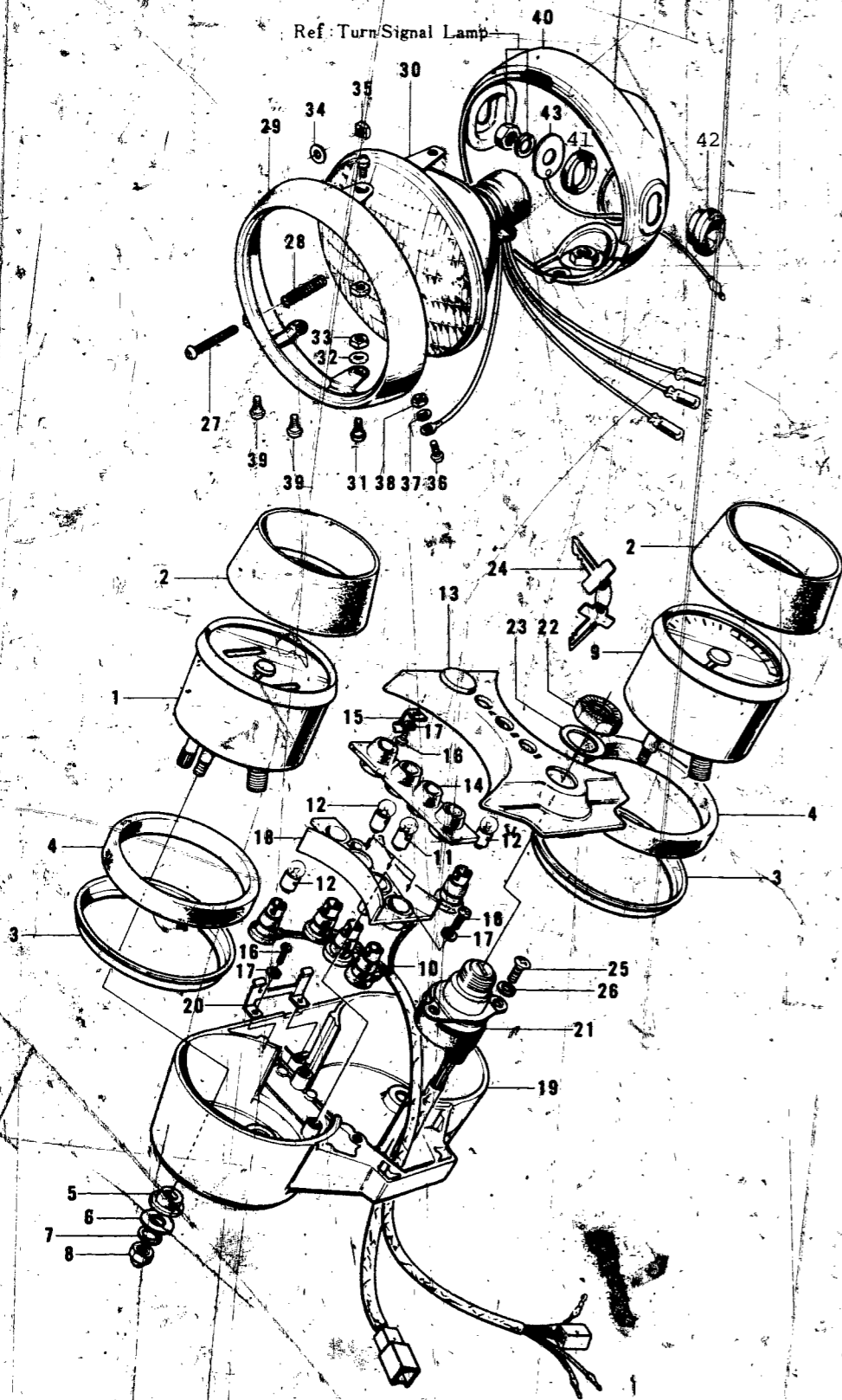


# HEADLAMP/METERS

# CONTENTS



Ref. No.	Part No.	Part Name	Quantity	Remarks
1~26	98125-047	METER SUB ASSY. MPH	1	
1~8	25005-074	SPEEDOMETER ASSY. MPH	1	
2	25012-012	COVER-meter	2	
3	25026-001	RING-meter	2	
4	25019-015	DAMPER RUBBER-meter	2	
5	25019-013	DAMPER RUBBER-meter case fitting	4	
6	411B0500	WASHER-plain, 5 m/m	4	
7	461E0500	WASHER-spring, 5 m/m	4	
8	92015-059	NUT, 5 m/m	4	
2~9	25016-020	TACHOMETER ASSY.	1	
10	25011-029	SOCKET-meter	1	
11	92069-017	BULB, 12V 1.5W	1	
12	92069-018	BULB, 12V 3W	5	
13	25023-002	COVER-meter case	1	
14	25019-014	DAMPER-meter shock	1	
15	25014-007	HOLDER B-meter case cover	2	
16	220B0408A	SCREW-pan head, 4 x 8	6	
17	461F0400	WASHER-spring, 4 m/m	6	
18	25023-003	COVER-meter socket	1	
19	25008-026	CASE-meter	1	
20	25014-003	HOLDER A-meter case	1	
21~24	27005-045	SWITCH ASSY-ignition	1	
22	27007-003	NUT-ignition switch	4	
23	27019-002	WASHER-ignition switch	1	
24	27008-048-81	KEY SET -181	1	
	27008-048-82	KEY SET -182	1	
	27008-048-83	KEY SET -183	1	
	27008-048-84	KEY SET -184	1	
	27008-048-85	KEY SET -185	1	
25	220B0508A	SCREW-pan head, 5 x 8	2	
26	461F0500	WASHER-spring, 5 m/m	2	
27~38	23003-018	LAMP UNIT-head	1	
27	23019-021	SCREW-focus adjusting	1	
28	23014-005	SPRING-focus adjusting	1	
29	23006-034	RIM-head lamp	1	
30	23007-043	SEALED BEAM UNIT	1	
31	23019-023	SCREW-pan head, 5 x 12	2	
32	23021-012	WASHER-plain, 5 m/m	2	
33	23020-020	NUT, 5 m/m	2	
34	23021-004	WASHER	1	
35	23020-018	NUT, 5 m/m	1	
36	220B0306A	SCREW-pan head, 3 x 6	1	
37	461F0300	WASHER-spring, 3 m/m	1	
38	310B0300A	WASHER-plain, 3 m/m	1	
39	23019-022	SCREW-pan head, 5 m/m	2	
40	23005-038-21	BODY-head lamp, flat black	1	
41	23066-005	DAMPER RUBBER B	2	
42	23066-001	DAMPER RUBBER A	2	
43	23076-001	COLLAR SET	2	

AIR CLEANER	B7
BRAKE, DISC	E5
BRAKE DISC, EQUIPMENT	C7
CABLES	F4
CARBURETOR	C2
CLUTCH	A7
COVERS, ENGINE	B5
COVERS, SIDE	E7
CRANKCASE	A5
CRANKSHAFT	A6
CYLINDER, CYLINDER HEAD	A4
ELECTRICAL, ENGINE	B6
ELECTRICAL, WIRING	G3
FENDERS	D7
FOOTREST	C6
FORK, FRONT, S2	D4
FORK, FRONT, S2-A	D5, D6
FRAME	C4
GEAR CHANGE MECHANISM	B3
HANDLEBAR	D2, D3
HEADLAMP, METERS S2	F5
HEADLAMP, METERS S2-A	F6
HUB, FRONT, S2	E4
HUB, FRONT, S2-A	E5
HUB, REAR	E3
KICKSTARTER	B4
MUFFLER	B7
OIL PUMP	C3
OPTIONAL PARTS	G4
PISTON, RINGS	A6
SEAT, DUAL, S2	F2
SEAT, DUAL, S2-A	F3
SWINGARM	C5
TAIL LAMP, S2	F7
TAIL LAMP, S2-A	G2
TANK, FUEL	E6
TANK, OIL	E7
TOOLS	G4
TRANSMISSION	B2
TURN SIGNAL, S2	F7
TURN SIGNAL, S2-A	G2
WHEELS	E2

S2-A